



BENEFITS PACKAGE



## WHO ARE IN TOTO ED?

In Toto Ed: a supportive and inclusive learning environment. An alternative to mainstream schools and colleges that builds a bespoke learning pathway around your needs and interests.

In Toto Ed is for young people who may need that little bit of extra support with their education, who perhaps haven't been able to thrive in mainstream education.

Whether they have SEN, ADHD, ASD, dyslexia, have emotional support needs or suffer from anxiety, mental health issues, physical disabilities – or need little to no support at all – we will create a positive, encouraging and safe environment for them to learn.



## A TAILORED PATHWAY

We put together bespoke education plans for our young people and deliver lessons to very small classes, as well as on a 1-to-1 basis, depending on their needs.

We like to meet a young person when they apply or are referred to us, and because everyone is so different and have such different needs, we speak with that young person and their parents or carers to work out what they want to achieve, and the best way for them to achieve it.

Our teachers are highly qualified and excel at what they do; passionate teachers who are dedicated to making a difference in a young person's life.



## OUR UNIQUE OFFERING

Unlike our mainstream counterparts, at In Toto Ed we teach in small groups with experienced, supportive staff who are trained to understand the challenges our students can face.

Most mainstream further education institutions deliver fixed courses via fixed schedules, to classes of fixed sizes. We provide the flexibility and focus on the individual that is often essential to our young people's wellbeing and ability to thrive.

There are considerable additional benefits that are available to staff as an In Toto Ed employee.



Our main benefits:

- Unlimited access to an award winning CPD platform
- Term time only (39 weeks including 5 inset days)
- Fully funded Level 3 Paediatric First Aid Qualification for all staff
- Fully funded enhanced DBS
- Accredited support through QTLS
- Training grants for qualifications, including NPQ, NPQSL and NPQ SENCO
- Access to extensive professional development opportunities
- Cycle to work scheme
- Free onsite parking
- Health Assured EAP programme which includes varied types of counselling, 24/7, 365 confidential helpline, mental health crisis phone support
- Employee recognition and service awards
- Access to my healthy advantage app which includes: wellness plans, rewards including discounts with a variety of retailers including travel agents and gyms
- Small class groups
- Casual Dress Code
- Company pension
- Free Specsavers eye test
- Work MacBook or iPad provided
- Free tea and coffee
- Bonus for referring a friend to In Toto Ed
- Access to the gym in each provision
- Blue Light card
- Free teacher planner
- Enhanced maternity leave
- Enhanced paternity leave
- Wellbeing leave
- Free online GP (from September 2026)
- Focus on manageable workload, including support for PPA
- Competitive salary with clear progression opportunities based on experience and development



## INSPIRATIONAL TEACHING

At In Toto Ed we are privileged to have an amazing team of highly-qualified, diversely-experienced, dedicated and caring staff across teaching, mentoring and operations.

With over a lifetime's collective experience between us all in the education and SEN sectors, we strive to deliver a truly bespoke and unique alternative to mainstream school and college.

We are always on the lookout for talented staff; our current vacancies are listed on our [website](#), but even if you do not see the position for you, please do get in touch at [hr@in-toto-ed.com](mailto:hr@in-toto-ed.com) - we would love to hear from you.

## CONVENIENT LOCATIONS

We have schools in Cambridge, Peterborough and London, all of which are close to major transport links.

**Our Cambridge school** is based in a quiet and rural setting, just to the north of Cambridge. Facilities include a Mac suite, music studio, science lab, gym, cookery room, and life skills centre.

Due to the rural location, we also have a large amount of open space.

**Our Peterborough school** is based at the Fenlake Business Centre, within walking distance of the city. We have a number of classroom spaces, our own construction workshops, social area, music studio, art studio and cookery room, sensory room, gym, art room, and science lab.

There is also have access to a large outside space for football and basketball.

**Our London school** and Head Office is situated in leafy Blackheath, in South East London.

In Blackheath we have a suite of Apple computers, music studio, gym, media room, cookery room, art room, science lab, and a range of flexible classroom spaces to support our diverse curriculum.



# CURRICULUM

At In Toto Ed we offer a bespoke pathway for each of our students. Courses we currently offer are listed below.

## Years 7-9:

English, Cookery, History, Maths, Science, Computing, PE, Music, Art and Design, Geography, PSHE, Religious Studies

## Years 10 and 11 (E1-L2)

### GCSE:

English Language, English Literature, Maths, Science, Computer Science, Music, History, Geography, Food Preparation and Nutrition, Art & Design, Design Technology, HPQ

### Arts Award:

Bronze, Silver and Gold

### Vocational Qualifications:

Beauty, Creative Media, Art and Design, Music, Music Technology, Cookery, Sport, Employability, Construction, Esports

### Functional Skills:

English, Maths and ICT



## Post-16 (E1-L3)

GCSE re-takes

### Functional Skills:

English, Maths

### Arts Award:

Bronze, Silver and Gold

### Vocational Qualifications:

Beauty, Creative Media, Art and Design, Music, Music Technology, Cookery, Sport, Childcare, Construction, Employability, IT, Games Design

### A-levels:

Available on request.



## WHAT OUR STAFF SAY

In Toto Ed is a wonderful place to work, where staff have the incredible opportunity to truly affect a young person's life. But don't just take our word for it - read below some testimonials from our current teachers.

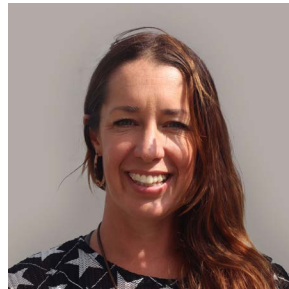


My favourite part of working at In Toto Ed is being part of a supportive team, and creating a welcoming and inclusive atmosphere for students and staff alike.

**- Nicole**  
Assistant Head (SENCO)  
*Peterborough*

I feel privileged to be part of something so special that is growing every day. I look forward to experiencing this journey with a fantastic, friendly staff team and a group of amazing young people.

**- Sarah-Jane**  
Curriculum Lead for Art  
*Cambridge*



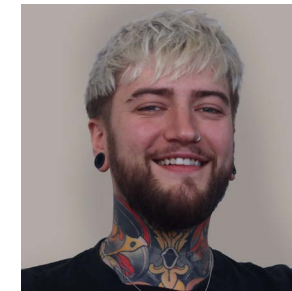
At In Toto Ed, everyone is the same. Everyone is equal, everyone has equal opportunities and that is what it's all about. And that's what I love about teaching at In Toto Ed, we make a difference for everyone.

**- Tanzeem**  
Maths Teacher  
*London*



Working as a Teaching Assistant at In Toto Ed is incredibly rewarding. I'm supported to grow, trusted to be myself, and valued for my hard work; all while seeing the real, day-to-day impact I make on students' lives.

**- Kyriakos**  
Teaching Assistant  
*Peterborough*



My favourite part of working at In Toto Ed is watching our students grow – not just in ability, but in confidence too. Seeing them achieve their goals and come out of their shells is incredibly rewarding.

**- James**  
Music Teacher and DDSL  
*Cambridge*

Working at In Toto Ed is very rewarding. The sense of community, supportive colleagues, and a healthy work-life balance all contribute to making this a place I genuinely enjoy coming to every day.

**- Daisy**  
Assistant Head (Teaching & Learning) and DDSL  
*London*



[See what other staff had to say about working at In Toto Ed](#)



## REFER A FRIEND

Earn an introduction bonus of **£500** by referring a friend to join the In Toto Ed team.

The recommended person must become a permanent member of the team, and both employees must still be employed for the bonus to be paid.

The scheme does not include freelancers/contractors/external service providers.

Payment will be pro-rated and will be paid via payroll after the recommended employee has completed their probation period, and will be subject to income tax and NI contributions.



## CONTACT DETAILS

LONDON

In toto ed

**London (Head Office)**  
St Agnes House  
Cresswell Park  
Blackheath  
SE3 9RD

020 3691 4053

CAMBRIDGE

In toto ed

**Cambridge**  
Fordham House Estate  
New Market Road  
Fordham  
CB7 5LL

01223 344355

PETERBOROUGH

In toto ed

**Peterborough**  
Fenlake House,  
Fenlake Business Centre,  
Peterborough,  
PE1 5BQ

01733 963980

**All schools:**  
[info@in-toto-ed.com](mailto:info@in-toto-ed.com)  
[www.in-toto-ed.com](http://www.in-toto-ed.com)

In toto   

---

totally, entirely, completely

[info@in-toto-ed.com](mailto:info@in-toto-ed.com)  
[www.in-toto-ed.com](http://www.in-toto-ed.com)